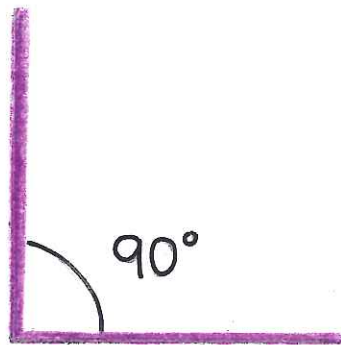


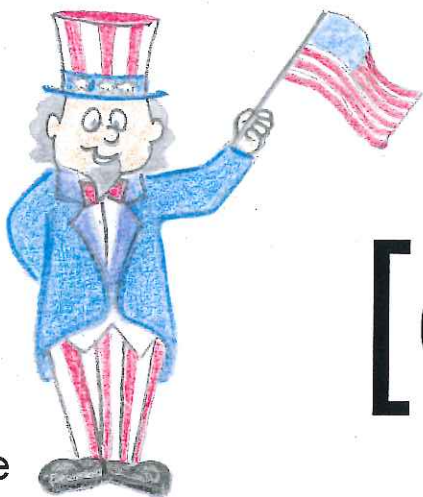
[ble

bub[ble



[gle

an[gle



[cle

un[cle



[tle

bot[tle

Final Stable Syllable # 1-4



can[dle

[dle



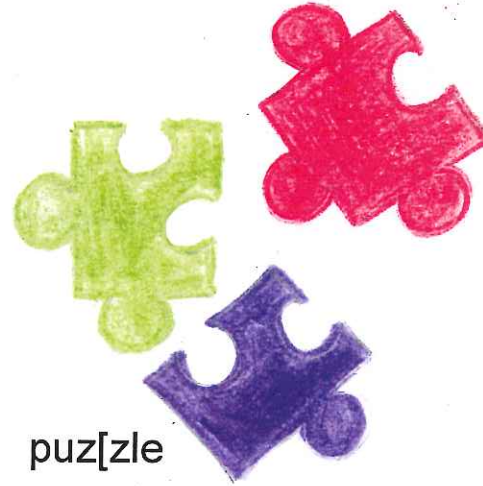
dim[ple

[ple



ruff[le

[fle



puz[zle

[zle

Final Stable Syllable # 5-8



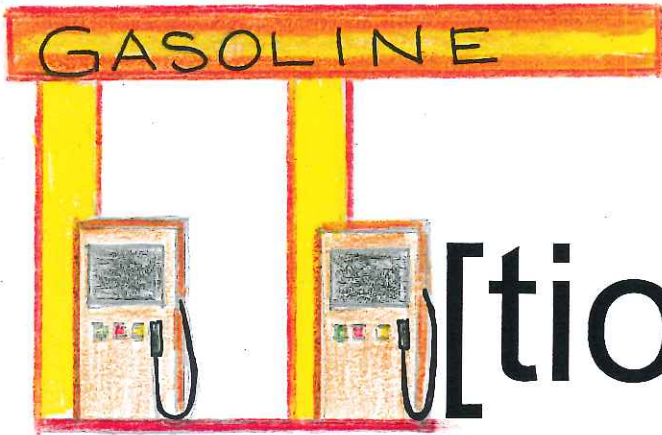
an[kle

[kle



has[sle

[sle



sta[tion

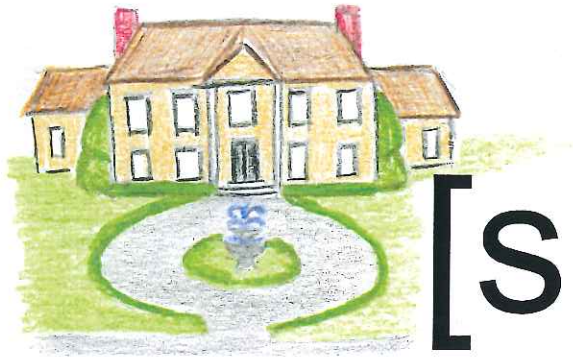
[tion



explo[sion

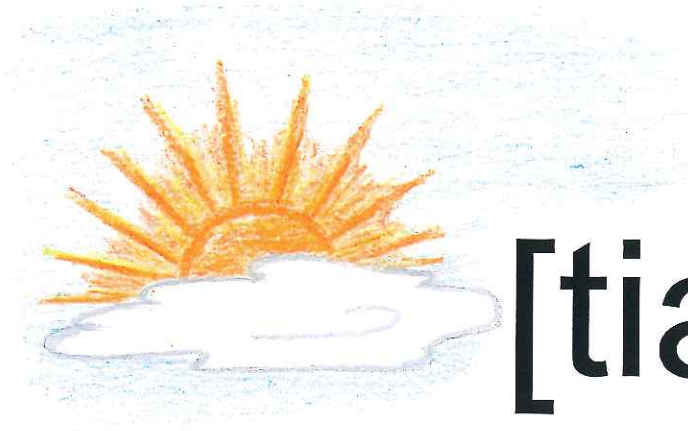
[sion

Final Stable Syllable # 9-12



[sion

man[sion



[tial

par[tial



[tian

mar[tian



[tient

pa[tient

Final Stable Syllable # 13-16



cau[tious

[tious



finan[cial

[cial



morti[cian

[cian



suffi[cient

[cient

Final Stable Syllable # 17-20



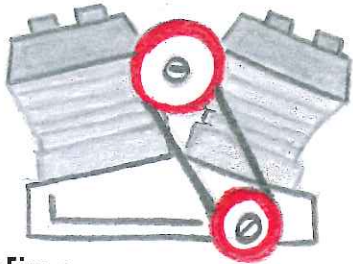
[cious

fero[cious



[ture

pic[ture



[ine

eng[ine



[ine

chlor[ine

Final Stable Syllable # 21-24



mal|ice

[ice



pol|ice

[ice



frag|ile

[ile



automob|ile

[ile

Final Stable Syllable # 25-28